



CapView is a health policy consultancy specializing in health care innovation and transformation. In a time of increasing complexity and convergence across new and old markets —we connect the dots for clients.

CapView’s State Medicaid and Reform Tracker (SMaRT[®])

SMaRT[®] is an exclusive CapView policy dashboard, which monitors Medicaid payment and delivery reforms and is customized to meet clients’ specific business and advocacy needs. SMaRT[®] provides program and policy insights on Medicaid and cross payer initiatives, drug benefit management, all-payer data bases, and policies addressing high-cost drugs and other services.

SMaRT[®] is not a syndicated product-- states and target program components are selected based on clients’ unique business needs. The SMaRT[®]

dashboard can target a subset of states or include all 50. Data and policy trends from state and federal sources are synthesized into a customized dashboard which identifies client-specific implications and facilitates strategic engagement for business and advocacy teams.

The SMaRT[®] Impact:
Business and advocacy teams anticipate and shape
—rather than react to—
state and national public policy trends.

The SMaRT[®] Analysis Builds a Customized Dashboard Addressing Client-Specific Business Issues. Unique business and advocacy priorities—specifically selected for each business and industry—are identified to facilitate strategic engagement. CapView’s monthly dashboard:

- Distills SMaRT[®] data highlighting key program trends and policy developments;
- Identifies reforms across state and federal policy initiatives and issues ripe for engagement;
- Prioritizes states for engagement and advocacy efforts (states classified as high, medium or low priority based on opportunities for effective engagement);
- Identifies engagement targets in state and federal government and with key stakeholders; and
- Provides key milestones and timelines for actionable engagement opportunities.

SMaRT[®] Synthesizes Key Data from 50-States. SMaRT[®] includes program variables from:

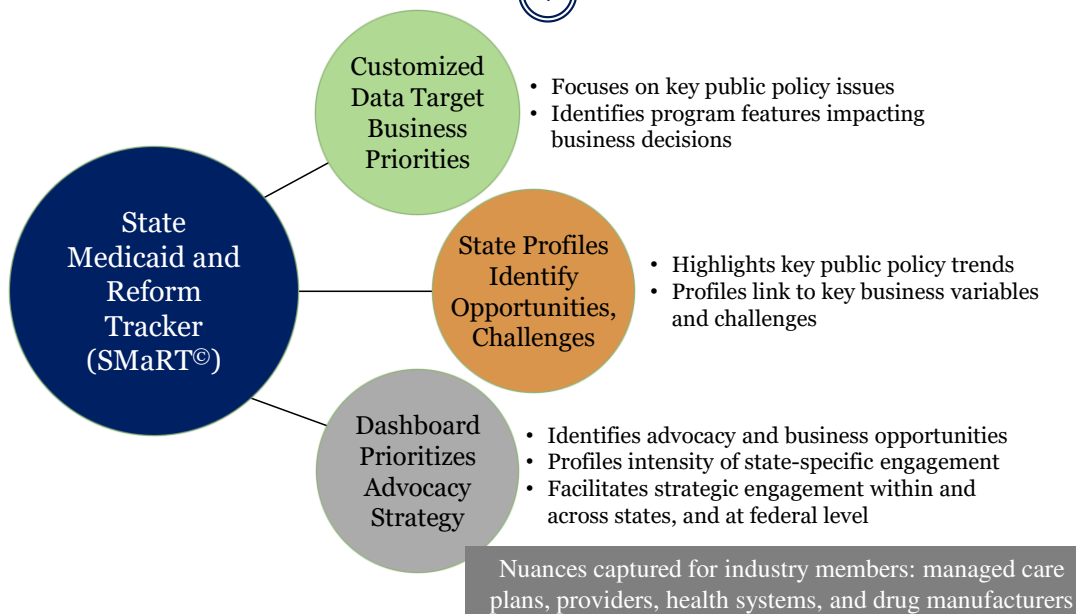
- Medicaid payment and delivery reforms (i.e. State Innovation Model (SIM) grants, Delivery System Reform Incentive Payment (DSRIP) programs, financial alignment demonstrations, state initiatives, and waivers);
- All-payer data systems;
- Medicaid drug management strategies related to physician administered drugs, oncology products, and high-cost drugs (i.e. Sovaldi, Daraprim);
- Medicaid managed care expansion, managed care drug and behavioral health management policies;
- Medicaid expansion decisions; and,
- Political environment within each state gauging the opportunities and potential impact of reforms.

Methodology. CapView reviews a range of publicly available information and builds relationships with states to track reform details as well as outcomes and evidence regarding program implementation. In developing the dashboard, CapView identifies key policy levers and analyzes the nature and breadth of each reform (i.e. size of impacted population, spillover effects to other payers, and immediacy of the reform). CapView uses these factors to assess engagement strategies and opportunities within each state.

● ● ● **Connecting the Dots in Health Care**

SMaRT's[©] Customized Dashboard Informs Business Strategy and Advocacy Priorities

1



•• CapView

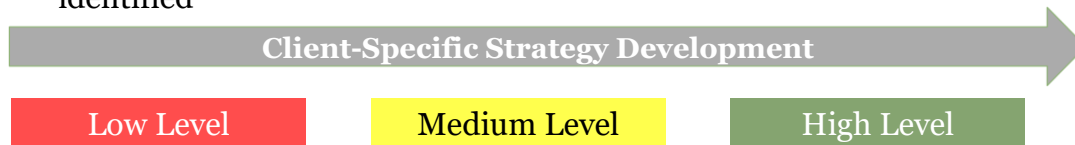
Monthly SMaRT[©] Updates Facilitate Timely Business Decisions

2

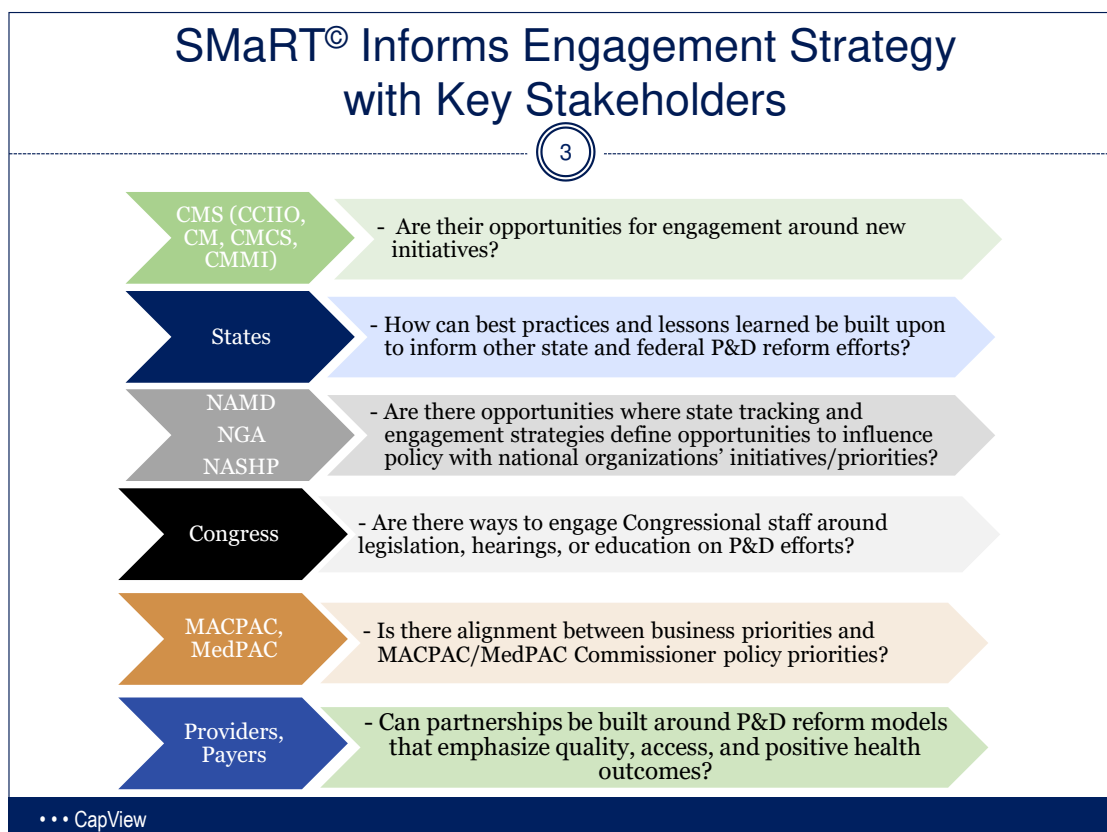
- Monthly PowerPoint presentation helps drive actionable engagement



- Intensity of monitory and engagement within and across states identified



•• CapView



For more information on the SMaRT[®] framework, variables, and for an example of the dashboard, please contact Lu Zawistowich at lu.zawistowich@capviewstrategies.com